

YC-MI.08A  
8 CH Dry Contact Module

**Product Manual**

Release : September 22, 2023  
Version : V1.4



Figure 1. 8 CH Dry Contact Module

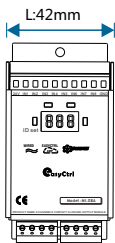


Figure 2. Dimensional Drawing - Front View

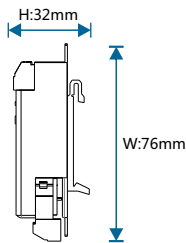


Figure 3. Dimensional Drawing - Sideview

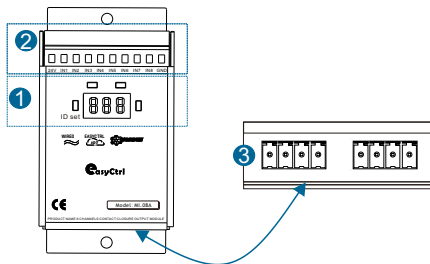


Figure 4. Product Information

Ten-digit address display : 0-6      The 1s address display : 0-9

Bus signal indicator

Example: if the module address is set to 25.  
Step 1: Long press the ID Set key, the 1s address flashes, short press to adjust to 5.  
Step 2: Long press the ID Set key again, the ten-digit address flashes, short press to adjust to 2.  
Step 3: Long press the ID Set key to exit the setup. If the ID Set key is not long pressed, the digital tube blinks for 10s to exit the setting.  
Note: The address can be set in the range 01-63(decimal).  
Note: Bus signal indicator light, circle means successful registration, no circle means not registered.

Figure 5. Address setup instructions

## Product Overview

8 CH Dry Contact Module (see Figure 1), serves as a system control unit, typically installed in a distribution box, with DIN rail installation. It occupies 2.5P module units and provides 8-channel dry contact sensor inputs. Compatible with reset panels or self-locking panels, it can connect to various dry contact output sensors such as motion sensors, radar sensors, and light sensing modules.

## Function Description

- Standard 35mm DIN rail installation: Occupies 2.5P module units.
- Phoenix terminal interface, stable and reliable, easy to connect
- Provide 8 channels switching input, 24V voltage output
- Can connect dry contact sensor, dry contact panel, etc
- With local and remote programming and testing functions.
- Supports online firmware updates and Bus network disconnection alarm function.
- Support YC-BUS communication.

## Precautions

- Use CAT5E or RVV4\*0.75 four-core wire for bus wiring.
- Do not connect signals of bus interfaces A and B incorrectly; otherwise, bus signals will be abnormal.
- IN1-IN8 channel dry contact input, do not exceed 30V; otherwise, the device will be burned.

## Product Information

Product Dimensions: See Figures 2 and 3

Product Wiring: See Figure 7-9

Product Information: See Figure 4

1. Function key:
  - ID Set key: Address setting 01-63, setting method (see Figure 5)
2. Curtain interface: IN1-IN8 input 24V is the common end, a total positive, 24V, GND output voltage, (see Figure 6)
3. Bus interface (see Figure 8) :
  - Bus interface sequence: 24V, GNG, A, B

## Product Installation

See Figures 9-11

- Step 1. Secure the 35mm rail with screws.
- Step 2. Hold the 8 CH Dry Contact Module at a 45 degree angle with both hands, and the bottom of the module is clamped against the guide rail. The whole module is pressed to the guide rail at a 90 degree angle, and the module is slid until it is in the correct position.

## Safety Warning

- Tightening torque should not exceed 0.4 Nm.
- Installation location: Distribution box./86 bottom box
- Do not connect the YC-BUS interface incorrectly, as it may damage the equipment.
- The YC-BUS interface must not be connected to AC power; otherwise, it will damage all devices on the bus.
- Ensure a good ventilation environment.
- Do not expose to rain, contact with other liquids, or corrosive gases.

## Packing List

- YC-MI.08A\*1/User Manual\*1/Certificate of Conformity\*1

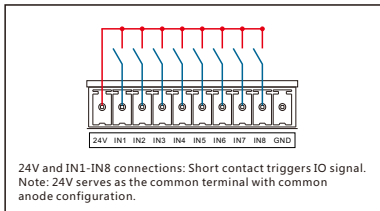


Figure 6. Dry Contact Wiring Diagram

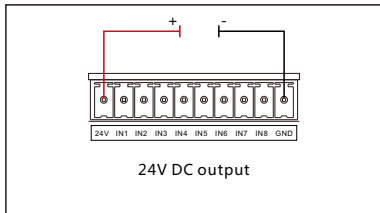


Figure 7. Dry contact output voltage connection

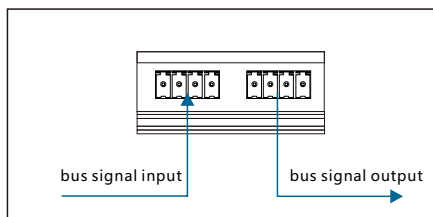


Figure 8. Bus Interface Wiring Diagram



Figure 9

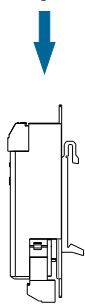


Figure 10

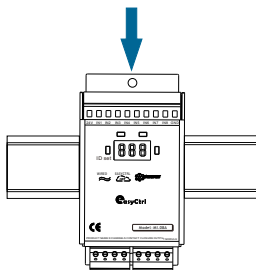


Figure 11

## Technical Parameters

### Basic Parameters

Operating Voltage	24VDC±10%
Rated Power Consumption	≤0.4W
Output Voltage	24VDC±10%
Dry Contact Input	8 channels
Load Contact	28V
Bus Interface	bus interface*2
Display Interface	4* light touch function key; 3* digital tube LED light
Protection	NONE

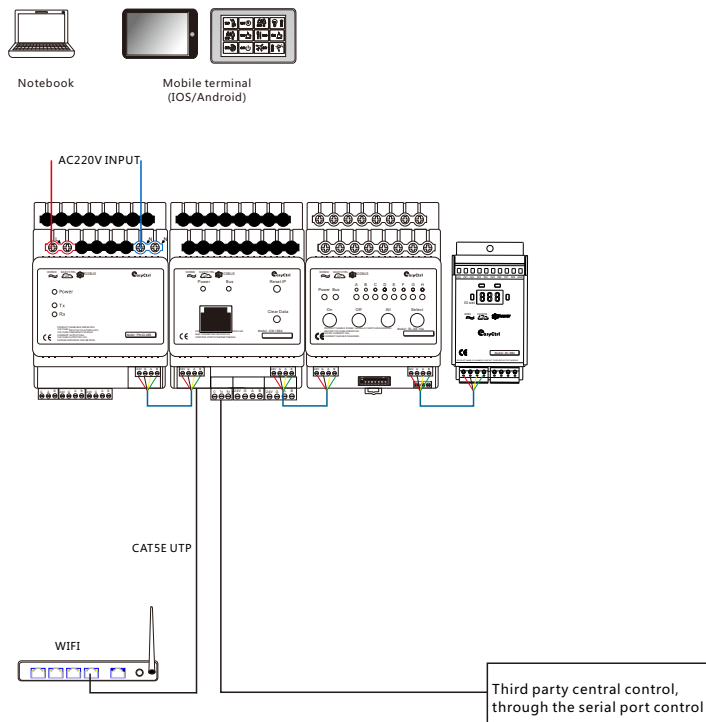
### External Environment

Operating Temperature	-5°C~45°C
Operating Relative Humidity	≤90%
Storage Temperature	-20°C~60°C
Storage Relative Humidity	≤93%

### Product Specifications

Dimensions ( L*W*H )	43mm*76mm*32mm
Net Weight	≤112 g/pcs
Enclosure Material	brushed aluminum shell technology
Installation Method	standard 35mm DIN rail mounting (see Figure 9-11)
Protection Level	NONE

### System Diagram



### Technical support

Service Hotline: 86-18029750069

working hours: 9:00-12:00,13:00-18:00,From Monday to Friday)

Email: ceshi@easyctrlg.com

website: <http://www.easyctrlg.com>



2025 Guangzhou Easyctrl Intelligent Technology Co., Ltd. All rights reserved.  
This manual may be changed or updated without prior notice.